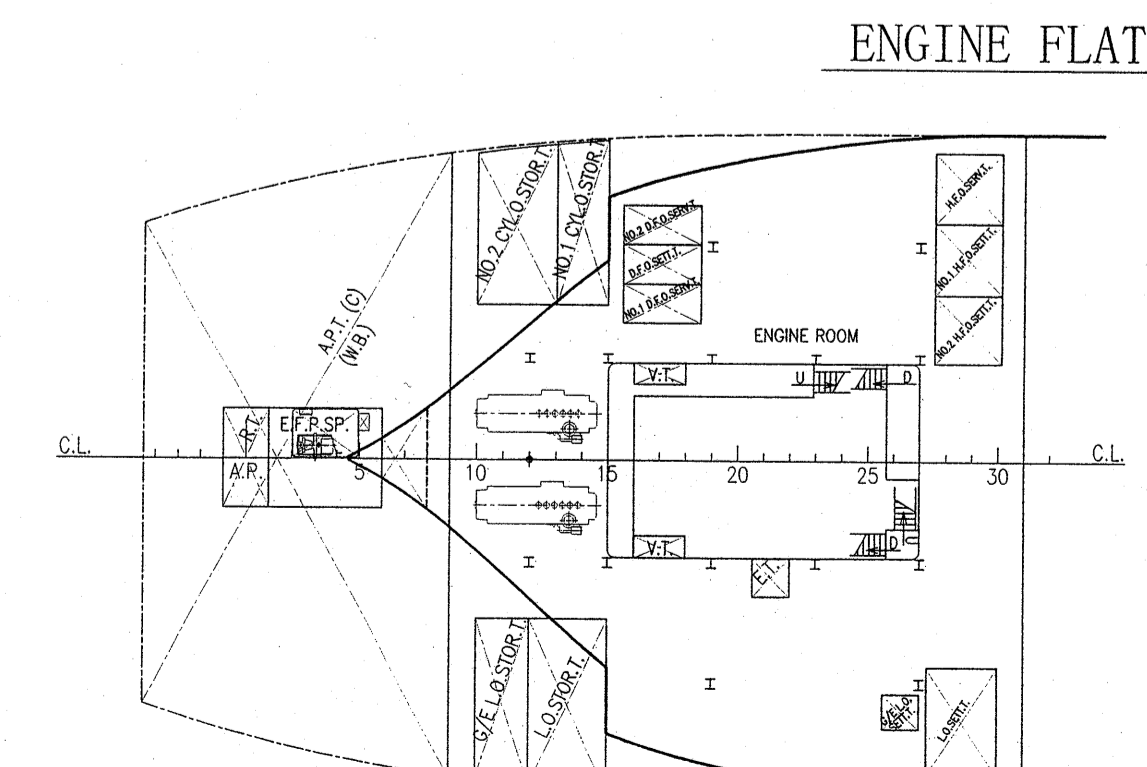
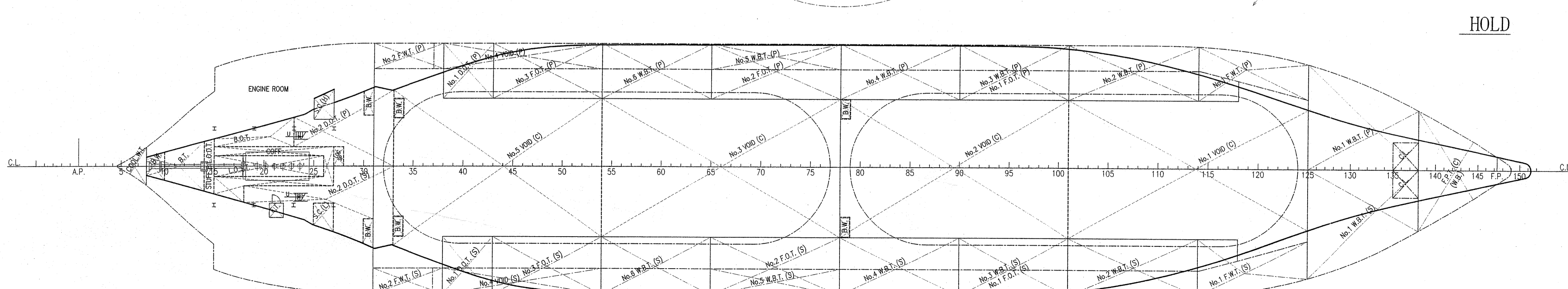
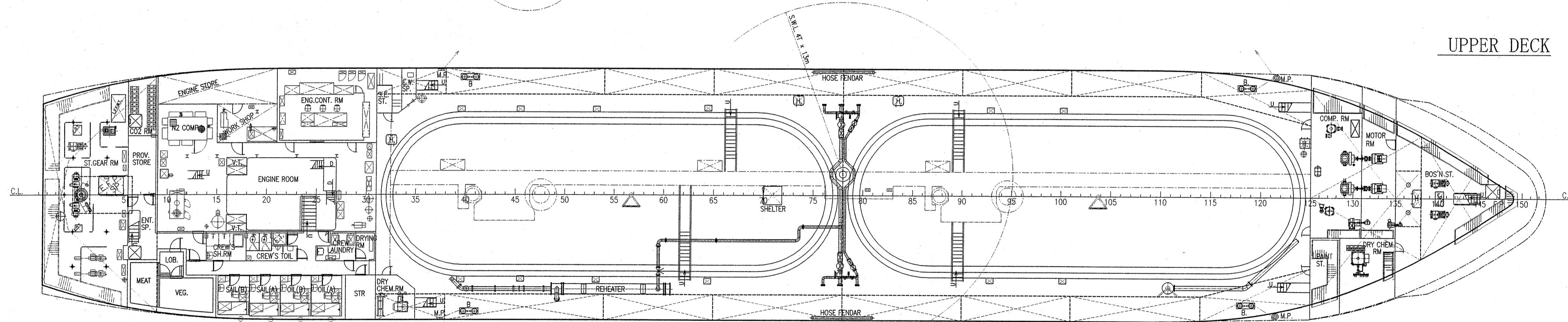
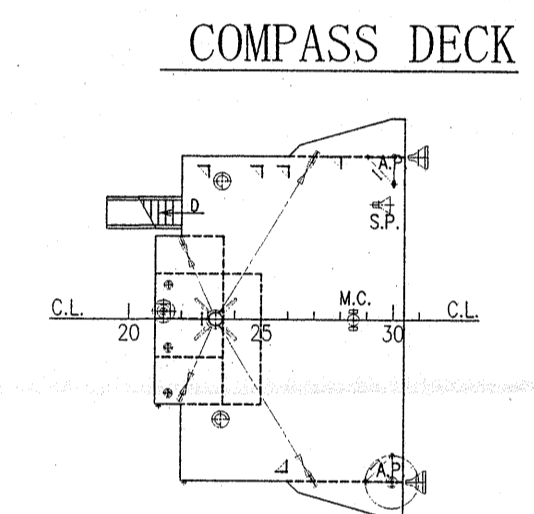
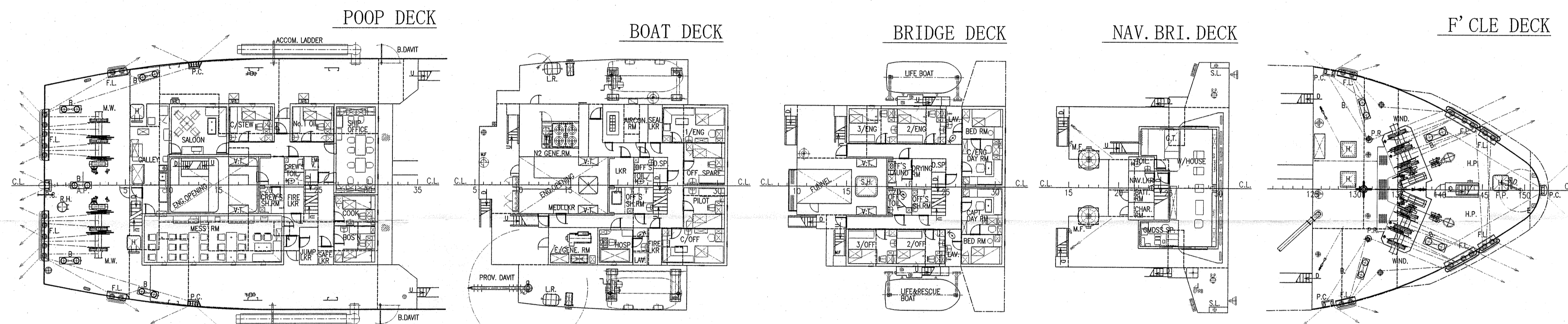
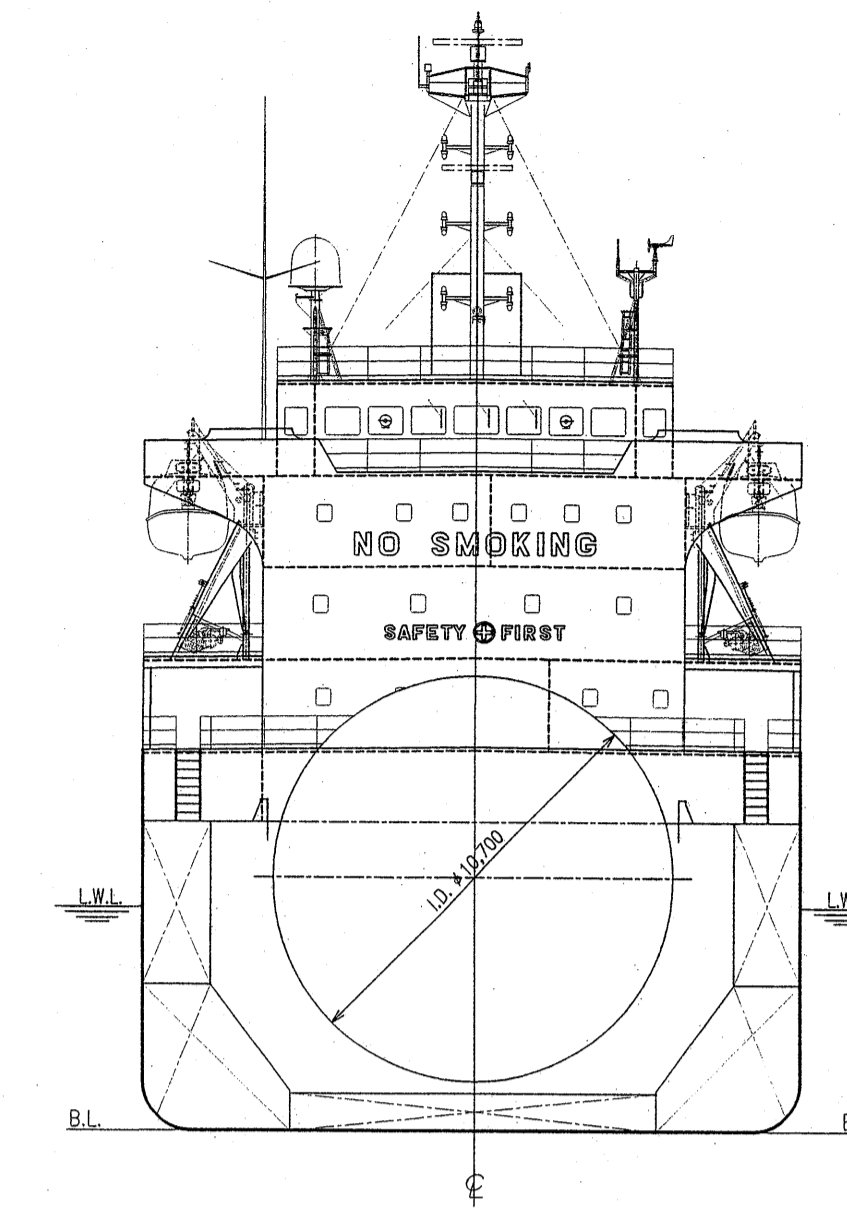
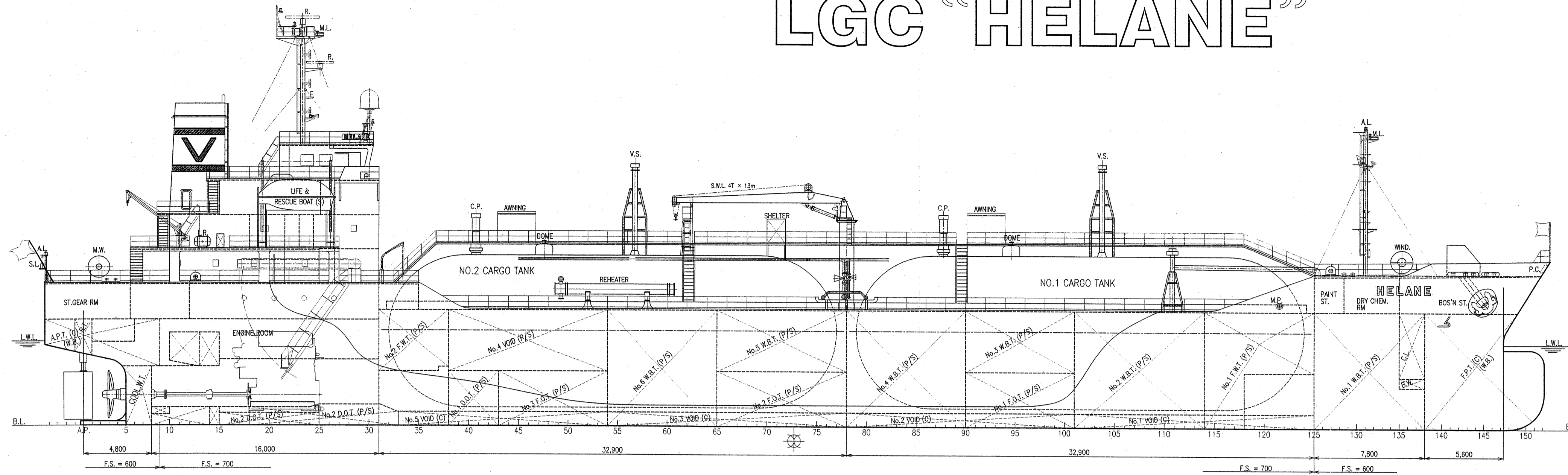


GENERAL ARRANGEMENT LGC "HELANE"



PRINCIPAL PARTICULARS

LENGTH (O. A.)	106.00 M
LENGTH (B. P.)	100.00 M
BREADTH (MLD.)	17.60 M
DEPTH (MLD.)	8.10 M
DRAFT (SUMMER) (EXT.)	5.964 M
GROSS TONNAGE	4,484 T
DEADWEIGHT	5,366.26 MT
CARGO TANK CAPACITY	5,018.700 M3
MAIN ENGINE	6L35MC × 1
COMPLEMENT	3,400KW × 210rpm × 1set
CLASS / FLAG	18P NK / HONG KONG

BIBLIOGRAPHY

2nd. Mar. 2007	Used of sister ship. (SNo. 7036)
3rd. Mar. 2008	Re-heater to be added.
15th. Jul. 2009	Final Plan.

5,000 CBM. PRESSURIZED
LPG/VCM CARRIER

SHIP NAME HELANE

GENERAL ARRANGEMENT

FINAL PLAN

IMO No. 9448865

SHIP No. 7055
SCALE 1/200

SHITANOE
SHIPBUILDING CO., LTD.
DESIGNING DEPARTMENT

MANAGER	M. Tomita
SECT. CHIEF	S. Maki
CHECKER	N. Akuyama
DRAWER	S. Miura
DRAWN DATE	13th, September 2006
DRAWING No.	GH - 1000