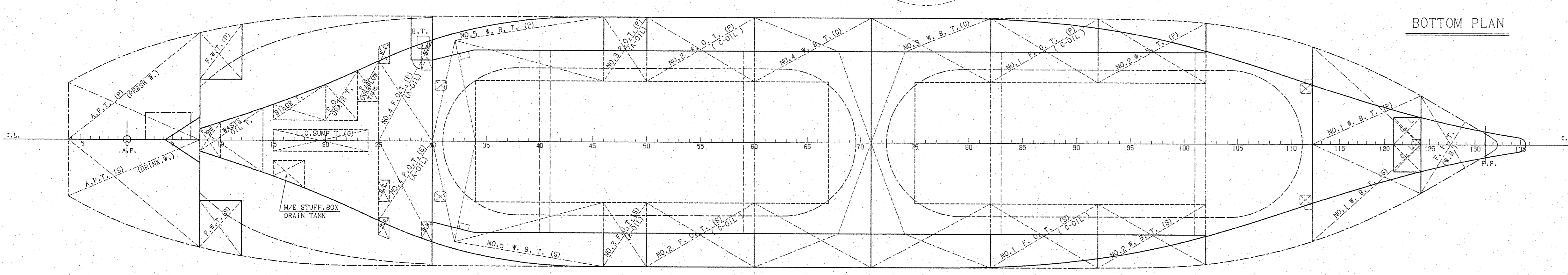
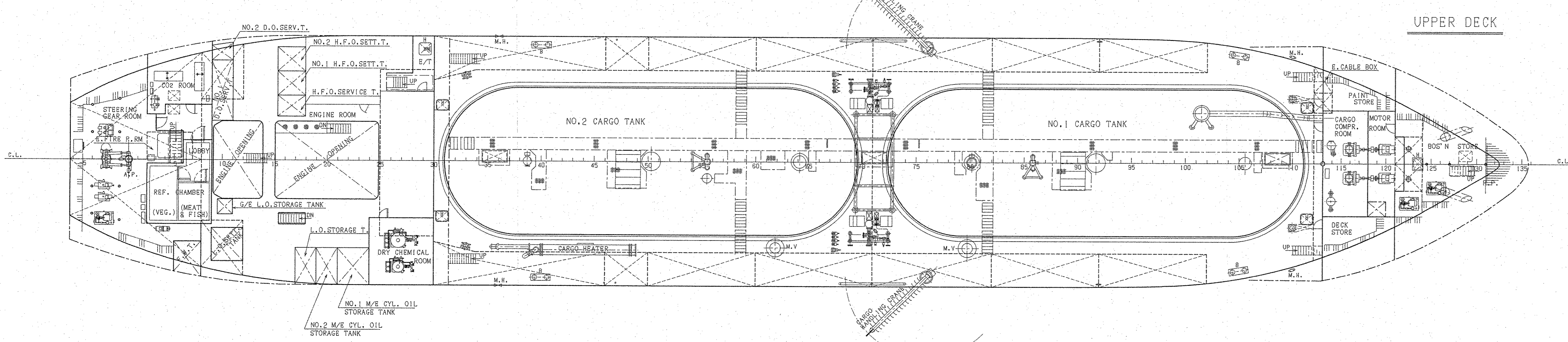
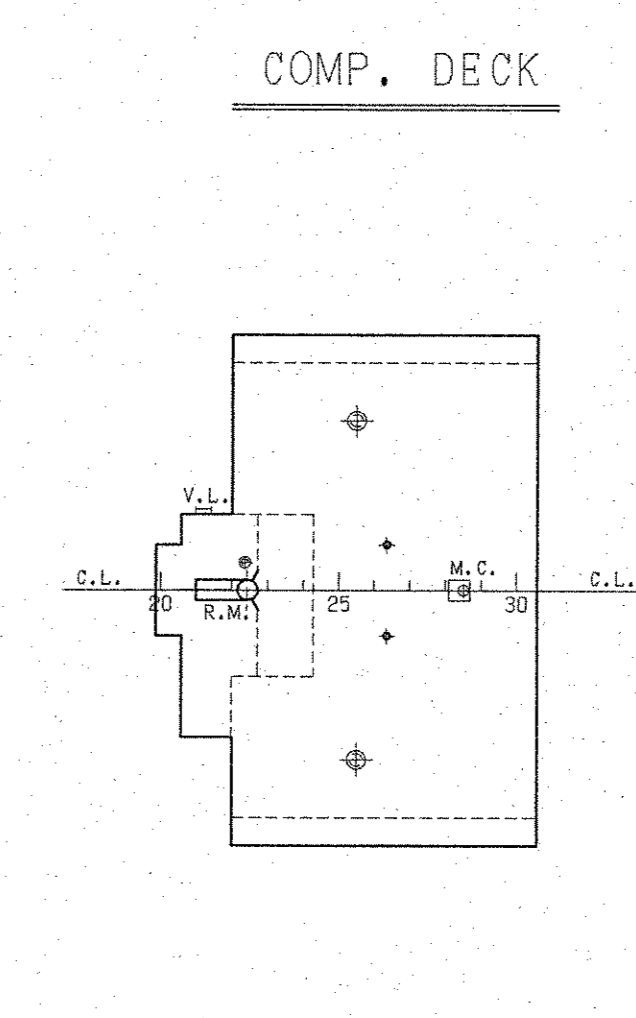
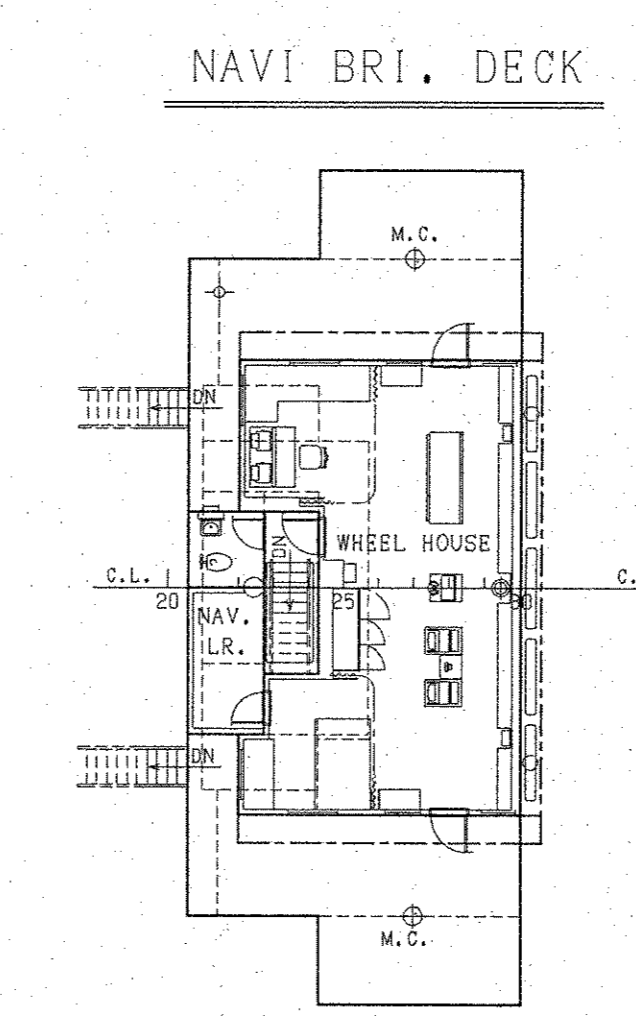
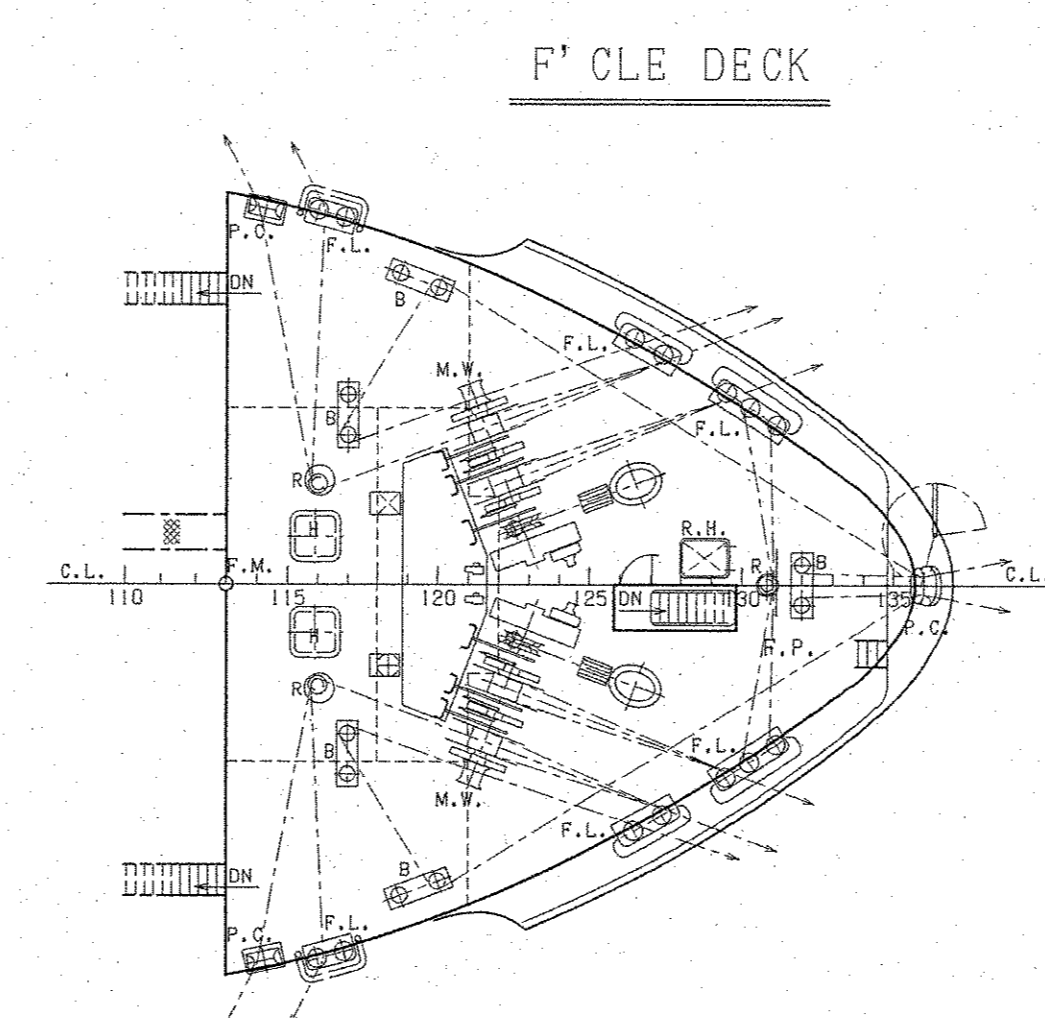
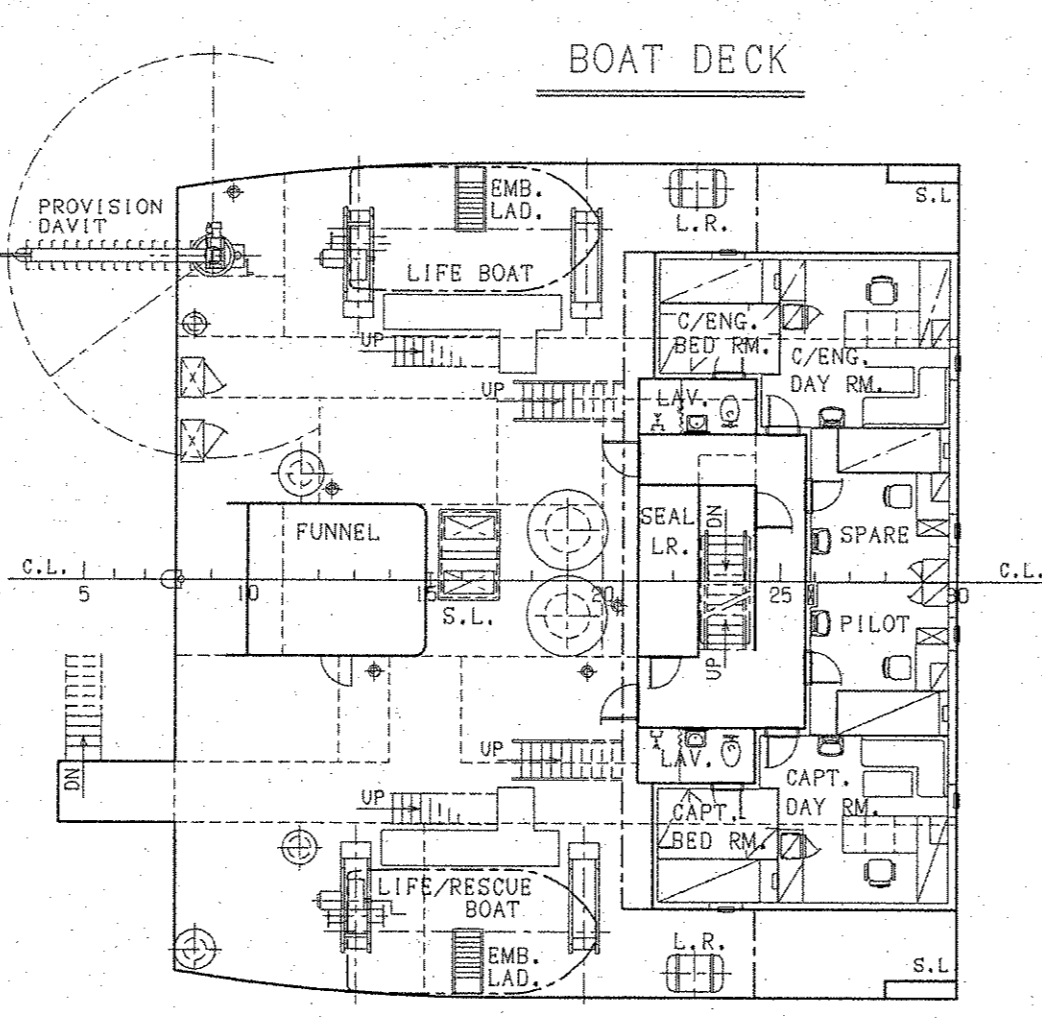
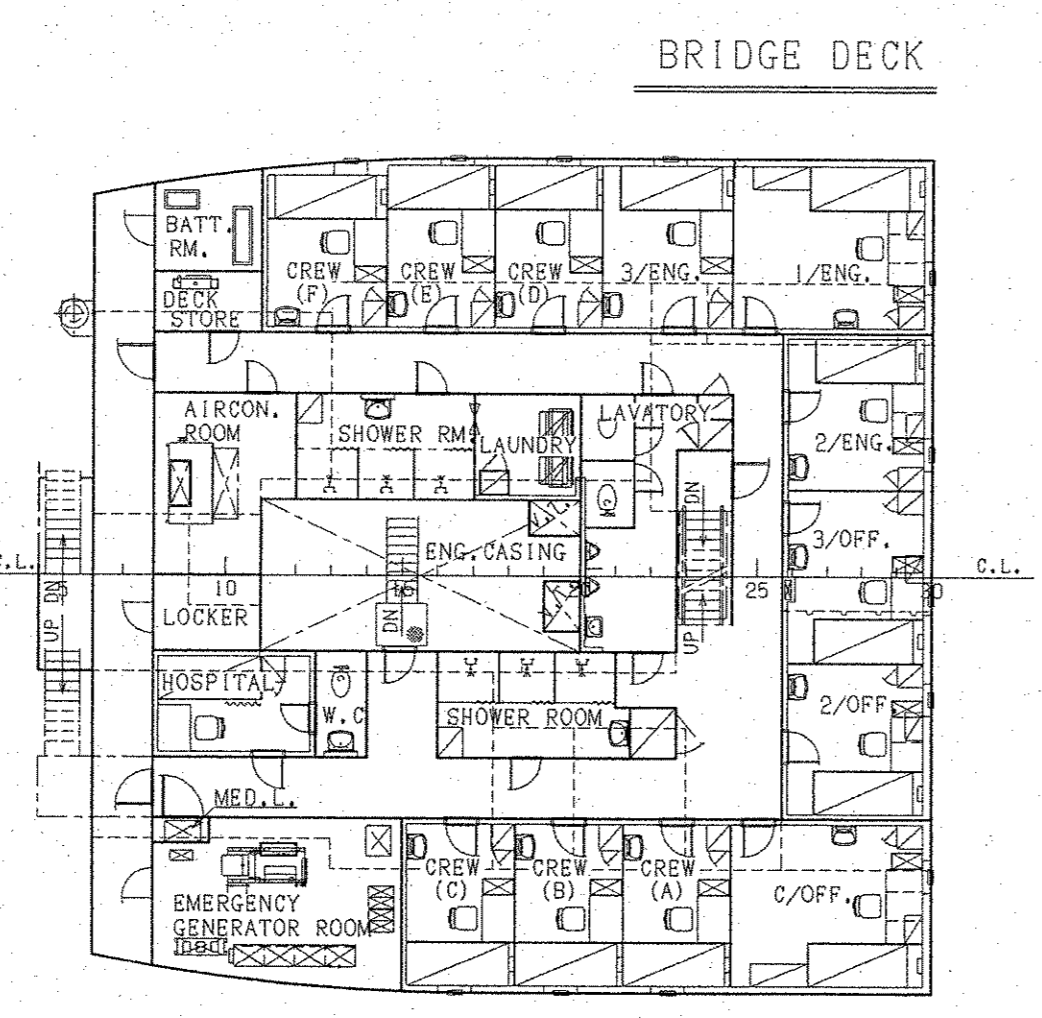
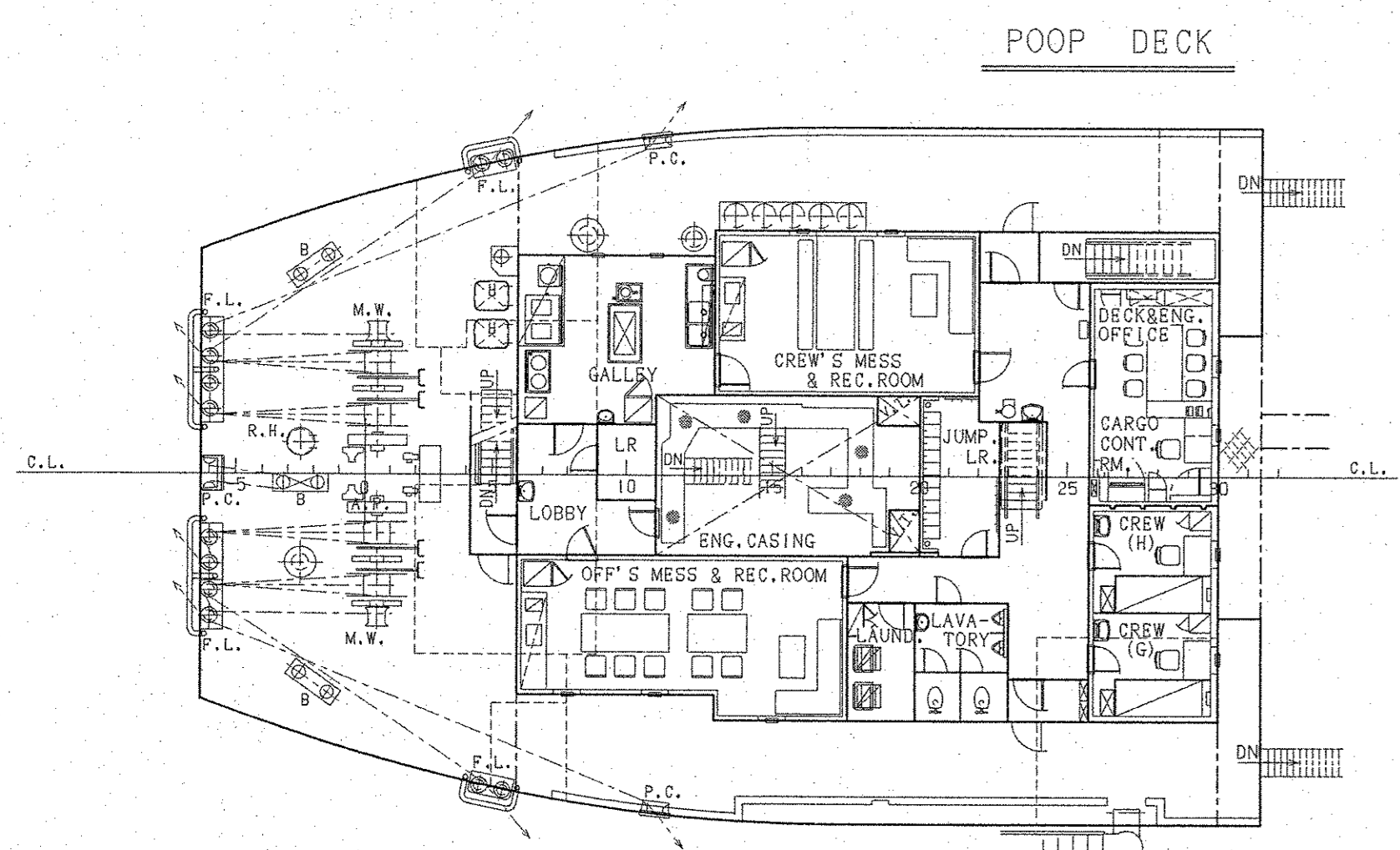
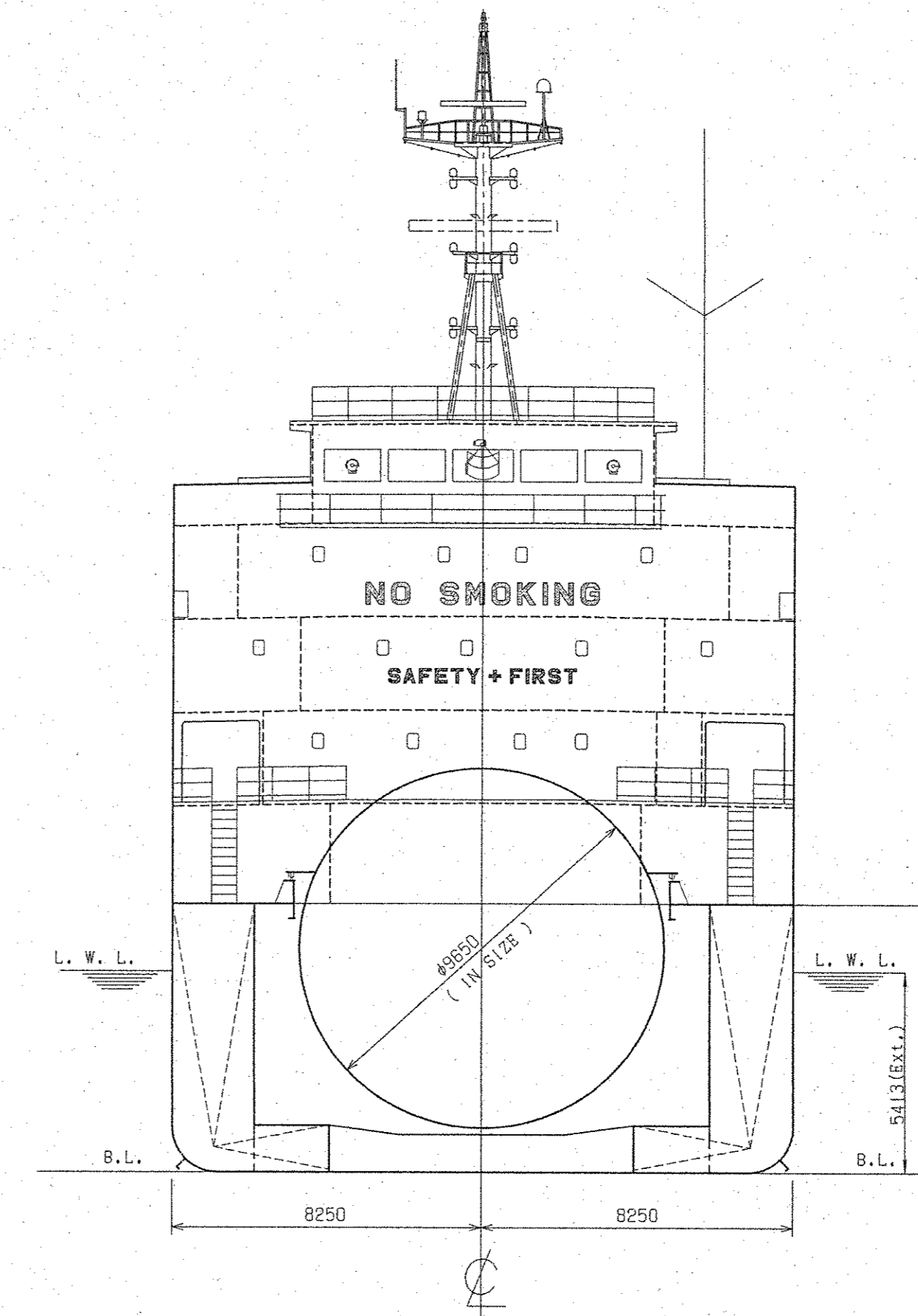
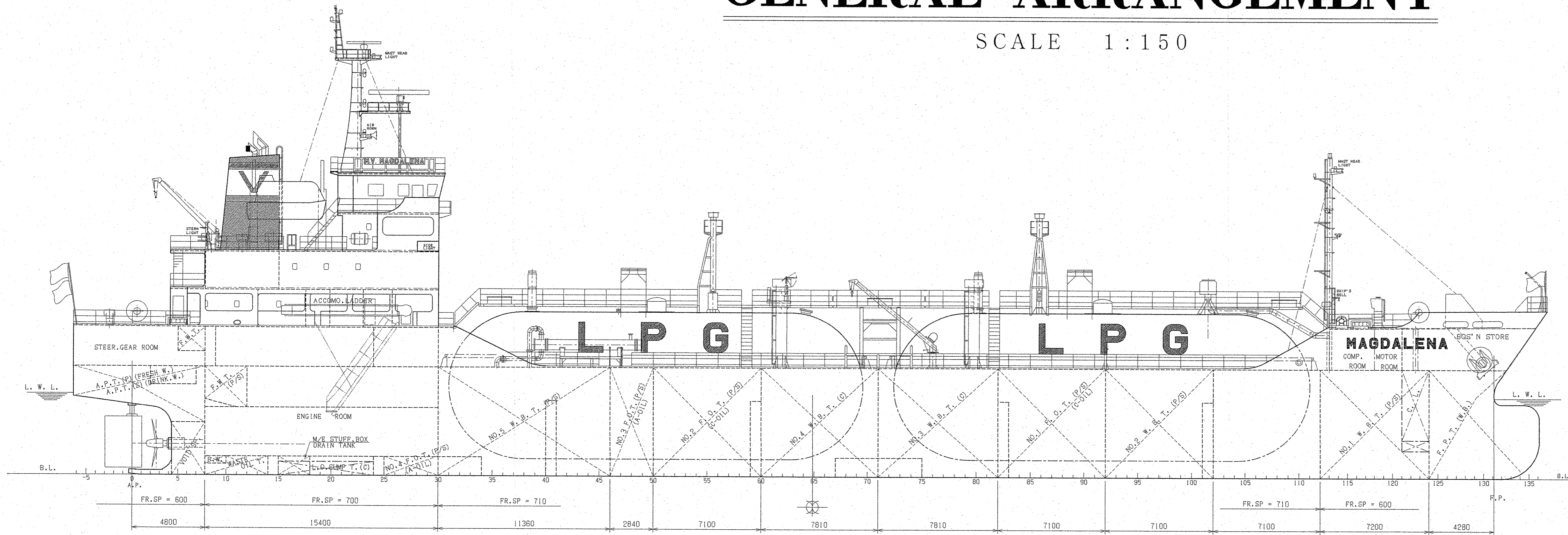


" M.V. MAGDALENA "

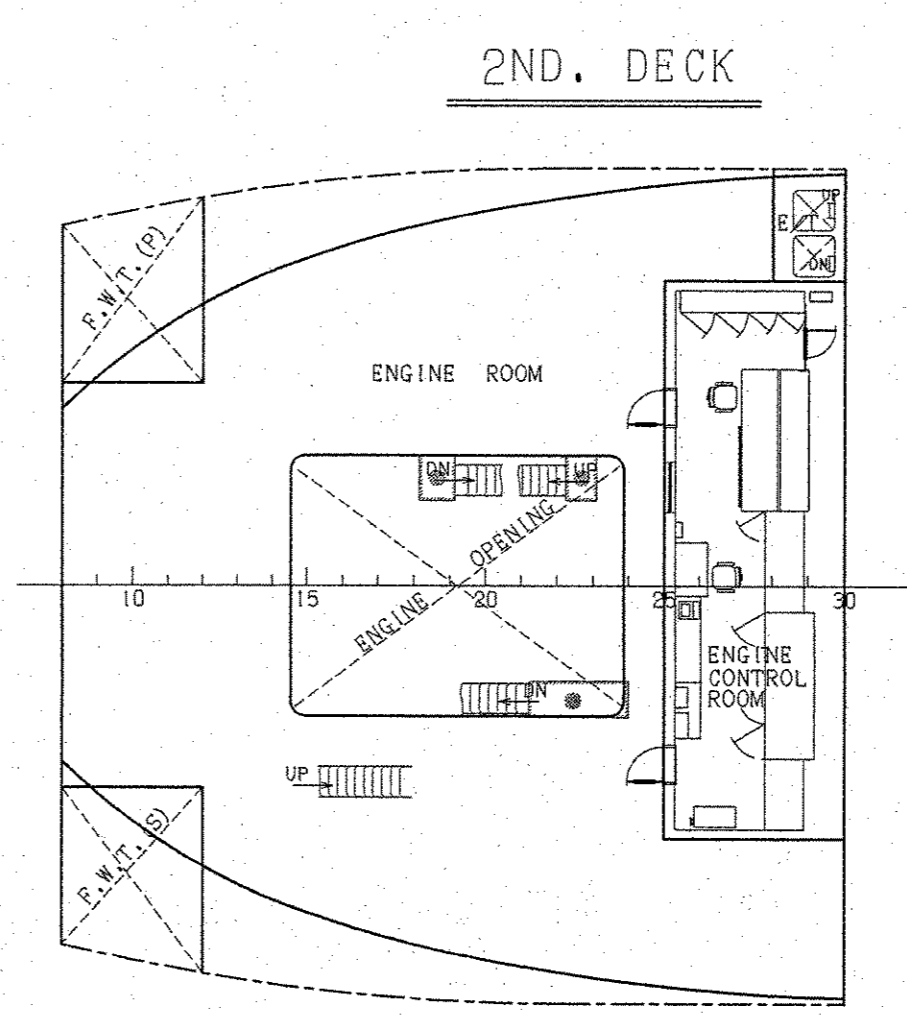
GENERAL ARRANGEMENT

SCALE 1:150



PRINCIPAL DIMENSIONS

LENGTH (O.A.)	97.236 m
LENGTH (P.P.)	89.90 m
BREADTH (MLD)	16.50 m
DEPTH (MLD)	7.20 m
FULL LOAD DRAFT (SUMMER EXT.)	5.413 m
GROSS TONNAGE (INTERNATIONAL)	3493 T
DEADWEIGHT (SUMMER)	3996.32 t
TANK CAPACITY	3540.87 m³
MAIN ENGINE	AKASAKA-MITSUBISHI UE 5UEC3L6X1
M.C.O.	2700kW x 210min"
C.S.O. (SOM.C.O.)	2430kW x 203min"
SERVICE SPEED (90M.C.O., 15NS.M.)	abt. 13.2 Kts
COMPLEMENT	18 P
CLASSIFICATION	NK, NSI (Liquefied Gas Carrier Type 2PG), MNSI (MO)
Descriptive Note : (Design maximum pressure 1.7MPa / minimum temperature -10 degree C)	
NAVIGATION AREA	OCEAN GOING



BIBLIOGRAPHY

8th October 2008
for FINISHED PLAN

MANAGER	SHIP NO.	DRAWING NO.	CLASS
ASS. MANAGER	1065	B-110	N K
CHIEF	3,500 CBM, PRESSURIZED LPG/VCM CARRIER		
ASS. CHIEF	GENERAL ARRANGEMENT		
CHECKED	FINISHED PLAN		
DRAWN	YAMANISHI CORPORATION		
DATE	8th Oct. '08	SCALE	1:150