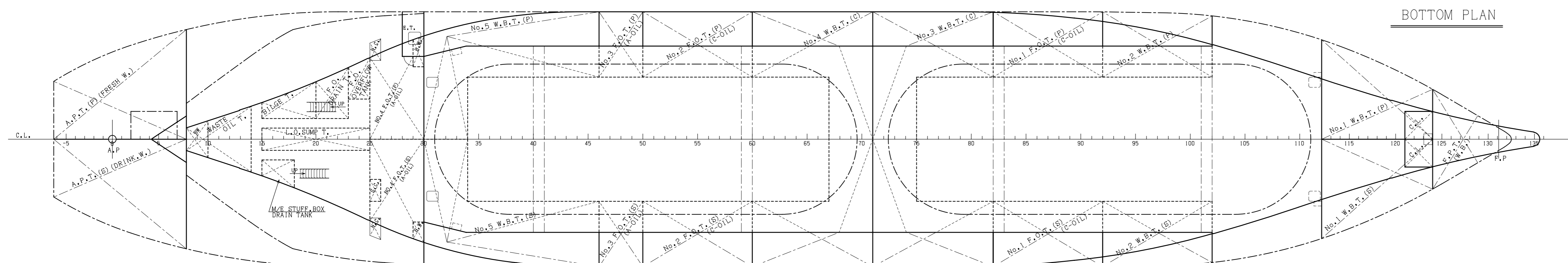
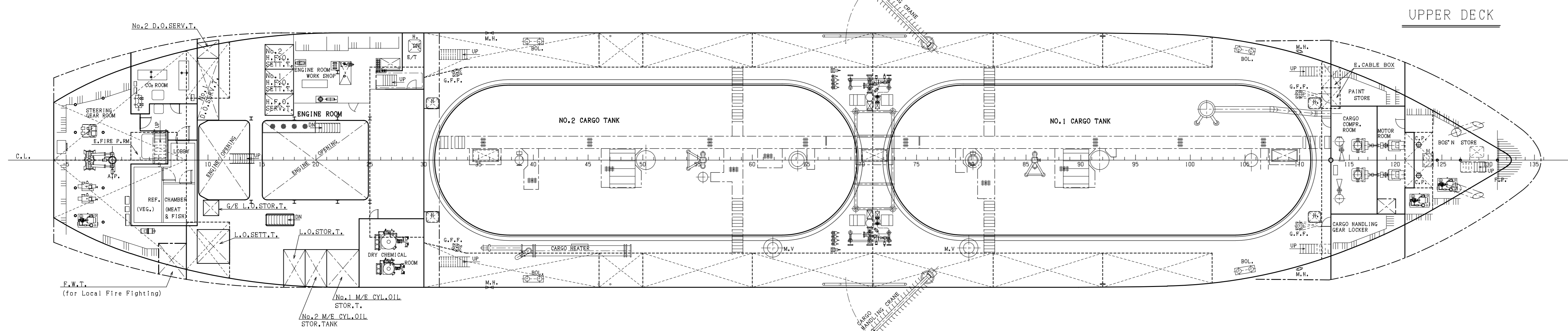
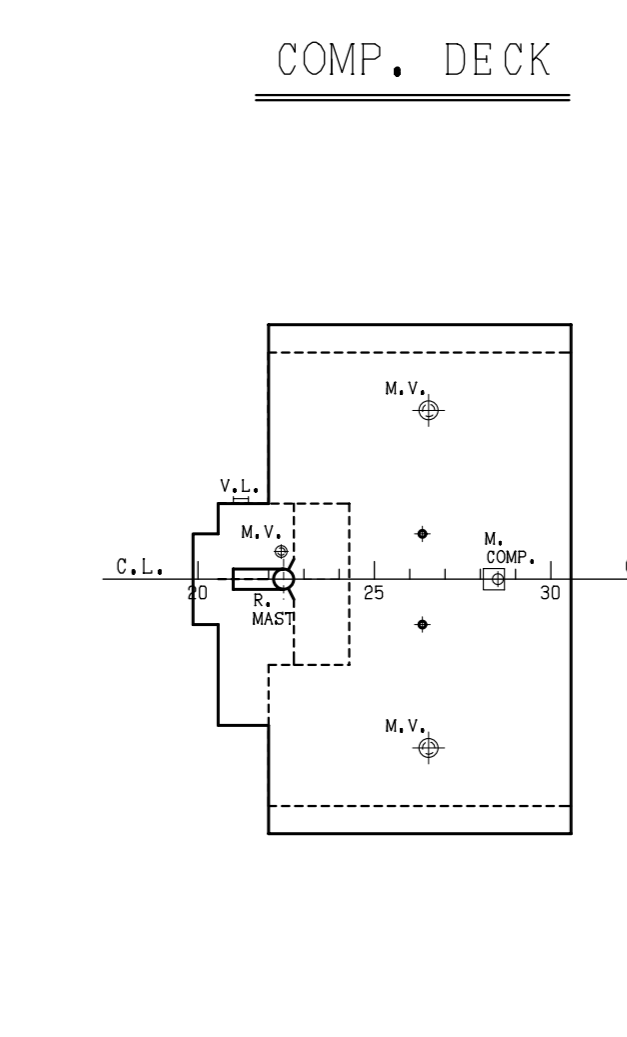
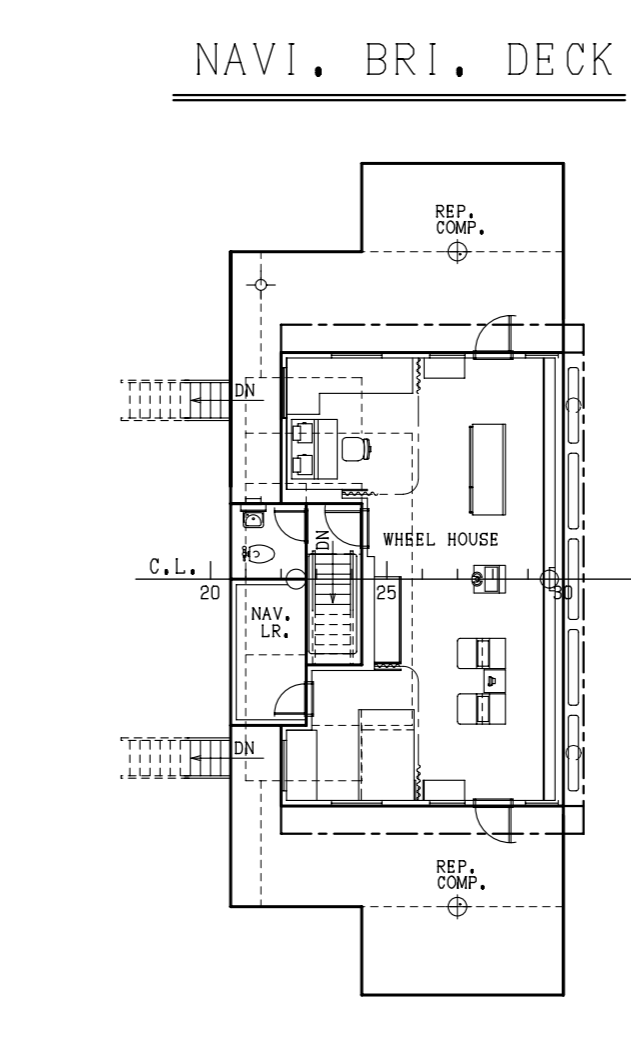
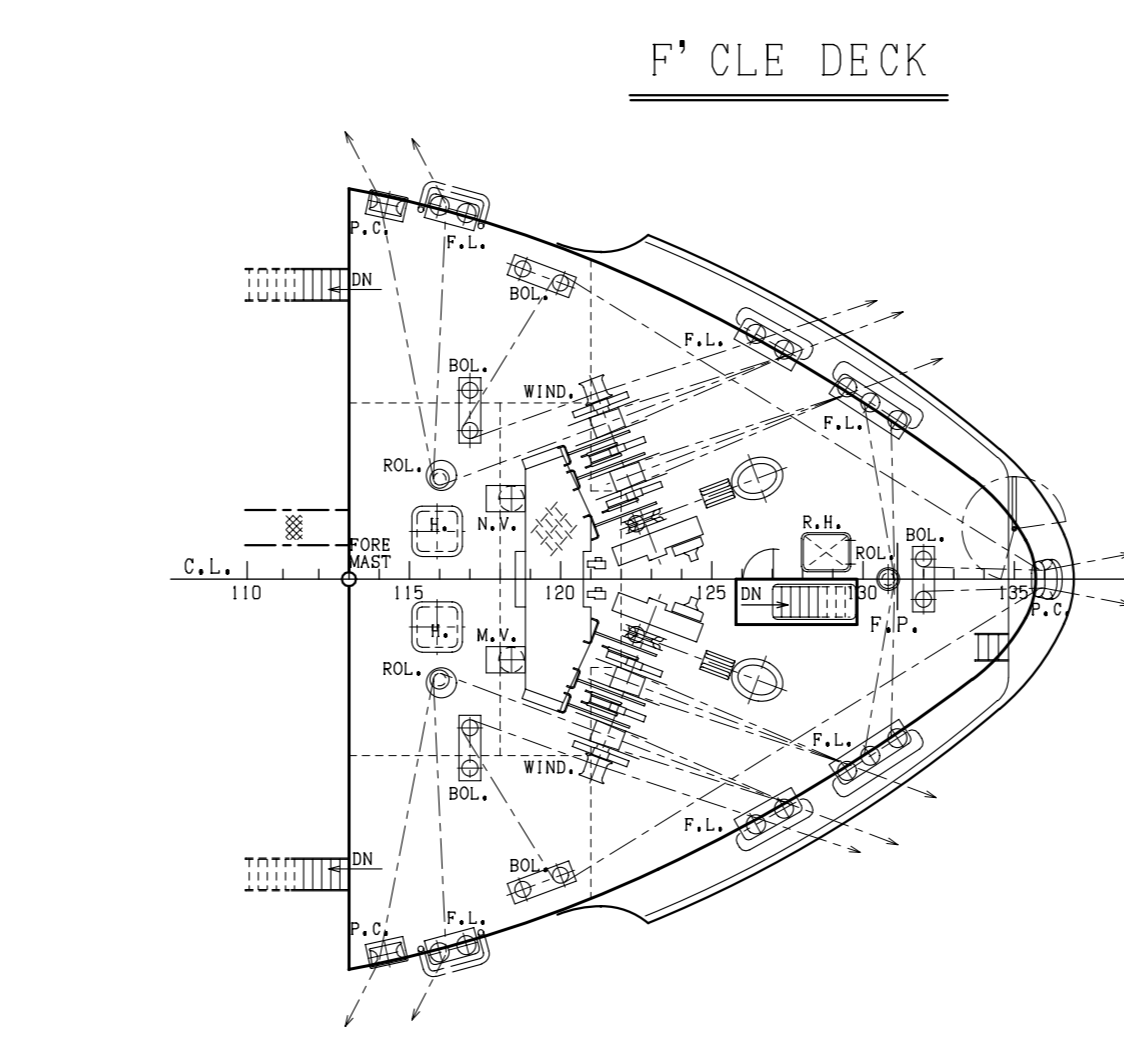
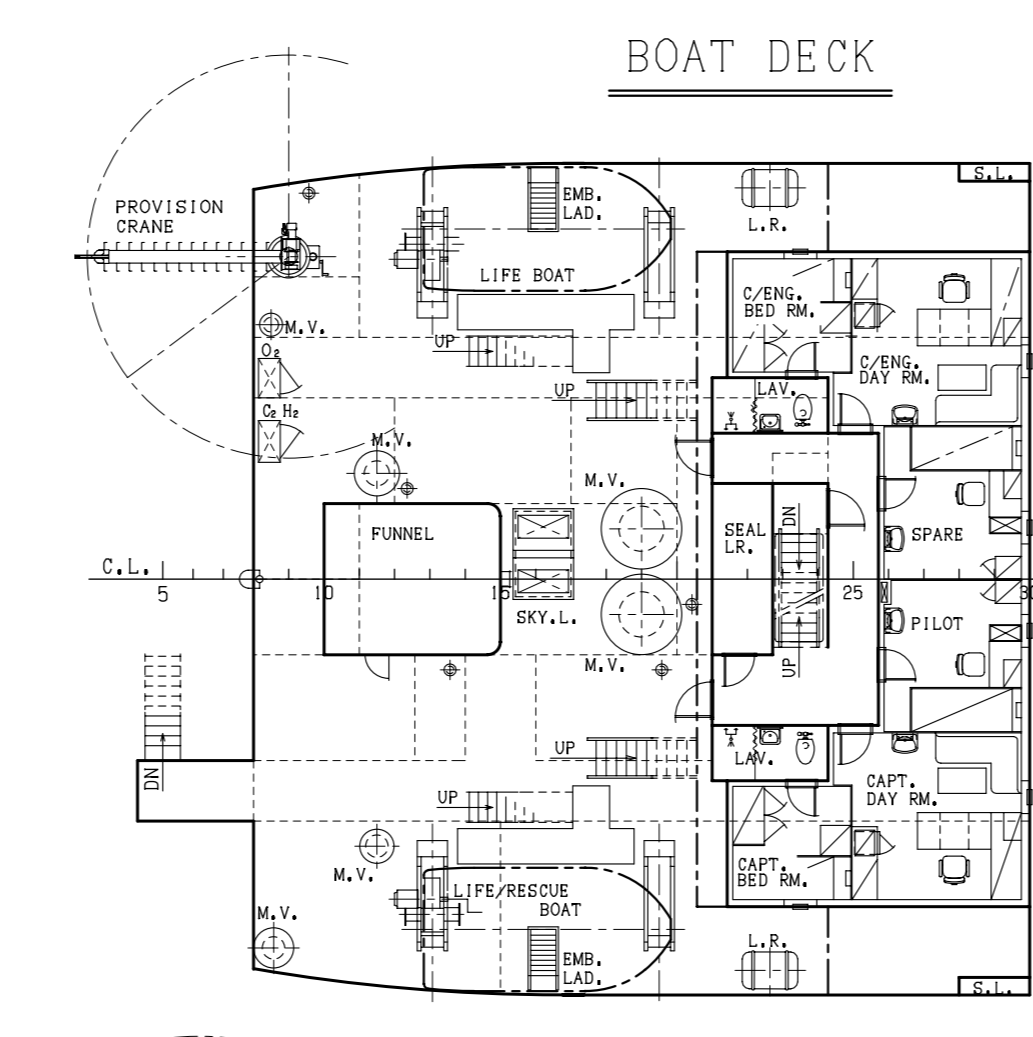
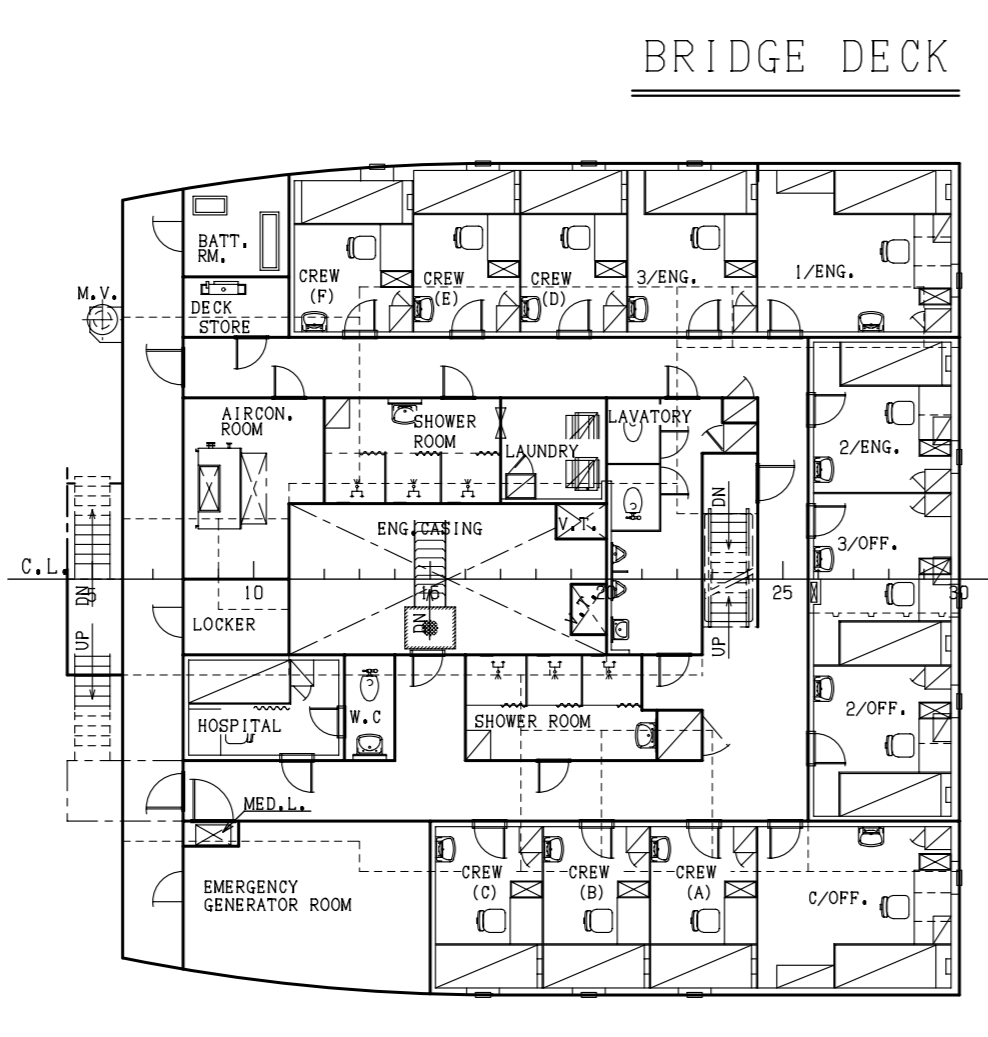
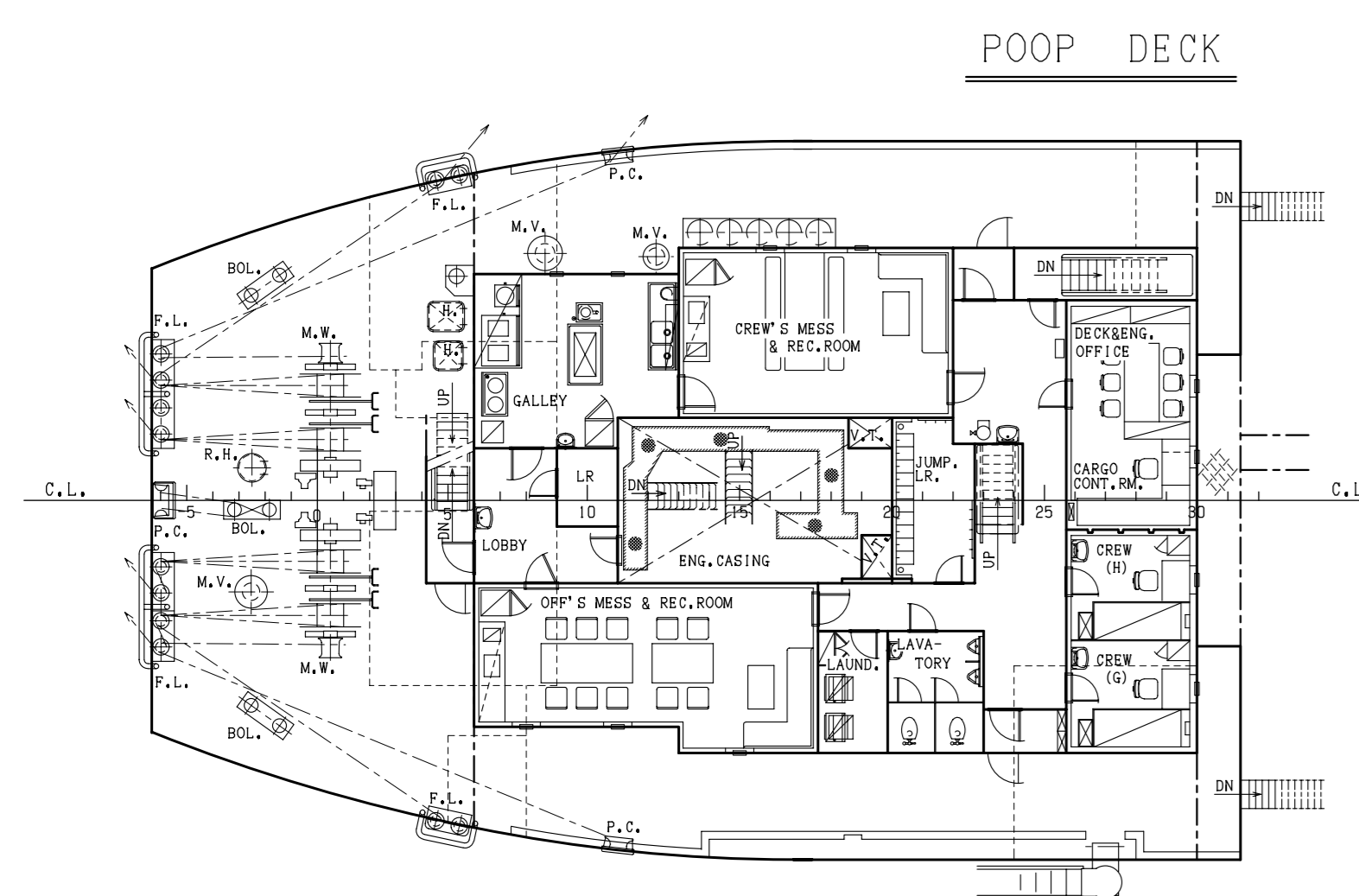
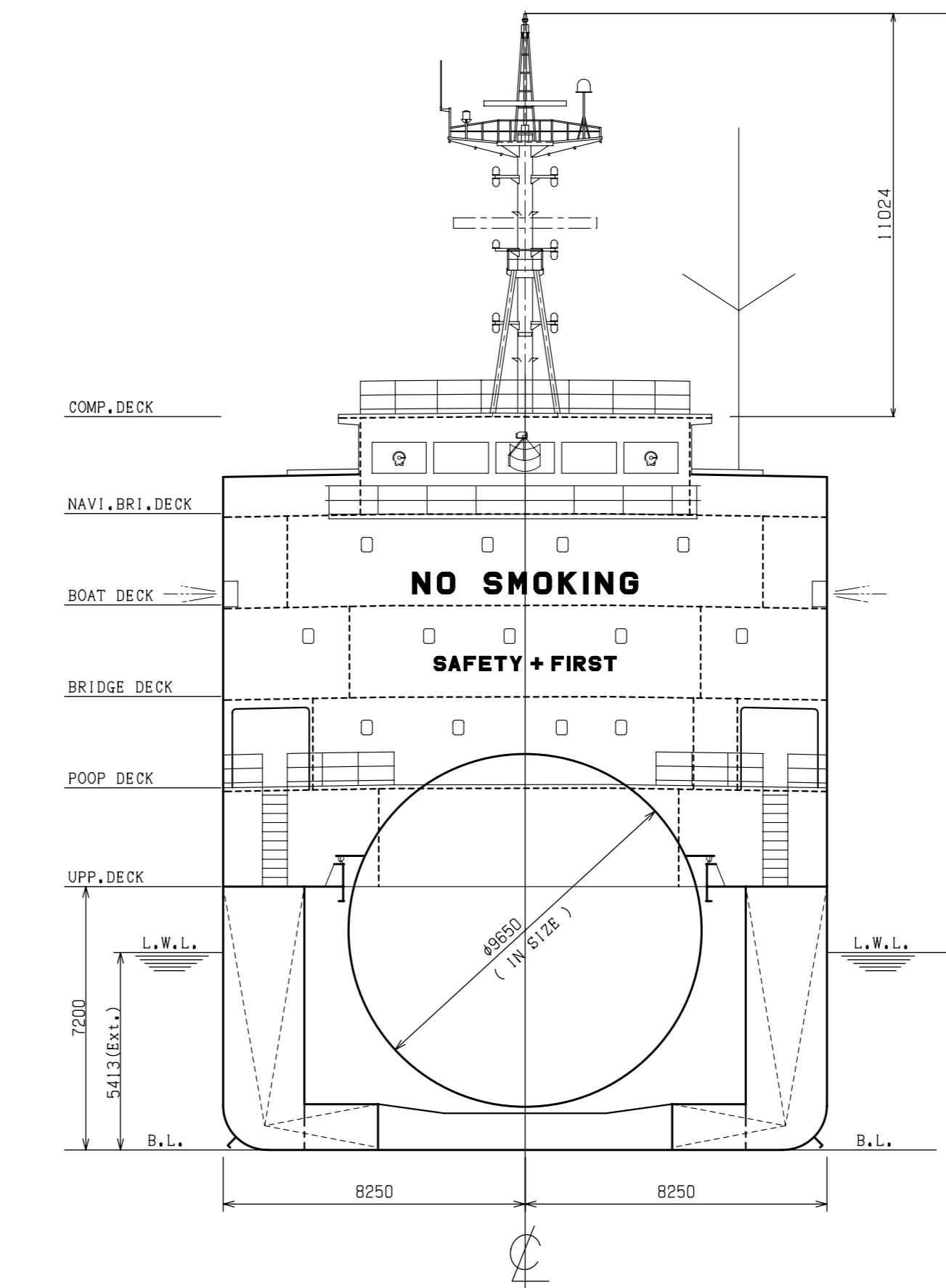
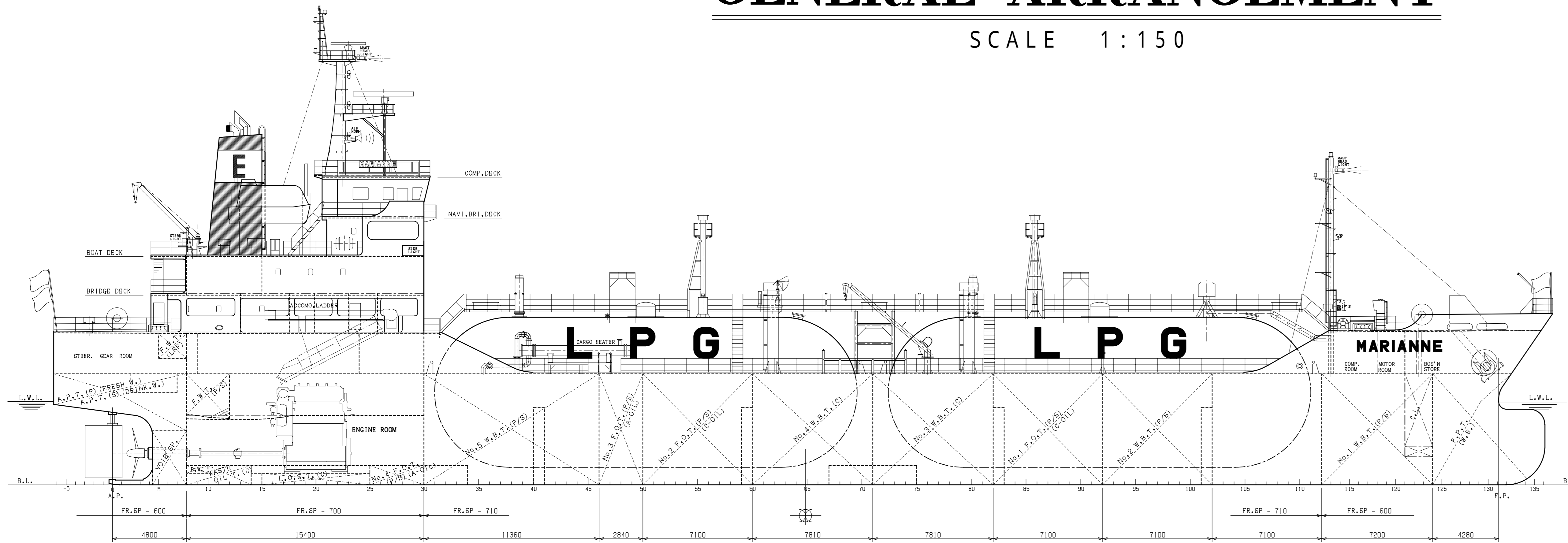


"M.V. MARIANNE"

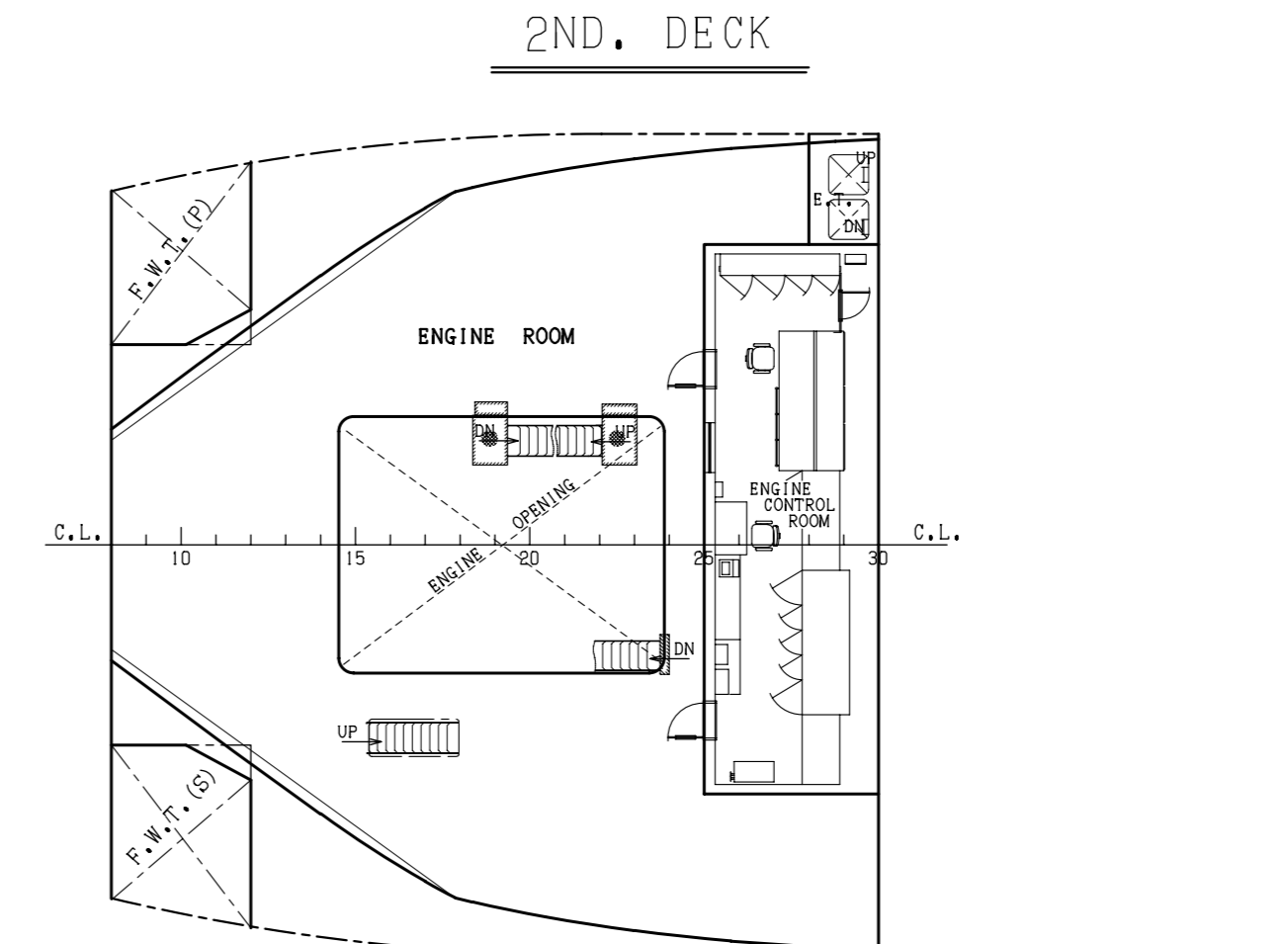
GENERAL ARRANGEMENT

SCALE 1:150



PRINCIPAL DIMENSIONS

LENGTH (O.A.)	97.236 m
LENGTH (P.P.)	89.90 m
BREADTH (MLD)	16.50 m
DEPTH (MLD)	7.20 m
FULL LOAD DRAFT (SUMMER EXT.)	5.413 m
GROSS TONNAGE (INTERNATIONAL)	3493 T
DEADWEIGHT (SUMMER)	4001.02 t
TANK CAPACITY	3538.97 m³
MAIN ENGINE	MAKITA-MITSUI-MAN B&W SL35MC-MARK6 X I
M.C.O.	2700KW X 210min¹
C.S.O. (90NM, C.O.)	2430KW X 203min¹
SERVICE SPEED (90NM, C.O., 15KG/M.)	abt. 13.2 Kts
COMPLEMENT	18 P
CLASSIFICATION	
NK, NSX (Liquefied Gas Carrier Type 2PG, MNSX (MD))	
Descriptive Note : (Design maximum pressure 1.77MPa / minimum temperature -10 degree C)	
NAVIGATION AREA	OCEAN GOING



BIBLIOGRAPHY

29th August 2009
for FINISHED PLAN

MANAGER	SHIP NO.	DRAWING NO.	CLASS
ASS. MANAGER	1079	B-110	N K
CHIEF	3,500 CBM.		
ASS. CHIEF	PRESSURIZED LPG/VCM CARRIER		
CHECKED	GENERAL ARRANGEMENT		
DRAWN	FINISHED PLAN		
DATE	29th August '09	SCALE 1:150	